

Visualizations for Real-Time Data

SOLUTION OVERVIEW



BENEFITS OVERVIEW

- Give analysts direct access to real-time operational data
- Deploy on the desktop or to MicroStrategy Web
- Federate data from historical databases and real-time sources
- Give business users the ability to design and modify their own real-time analytics dashboards

Leverage Your Investment in MicroStrategy

Do your analysts have direct access to real-time operational data?

As Panopticon's leading partner in the United States and MicroStrategy's Premier Alliance Partner in the Midwest, ZY Vision provides a versatile platform that integrates Panopticon's data visualization software with MicroStrategy's reporting capabilities to deliver effective monitoring, fast analysis and accurate reporting of data in real-time, in order to make better decisions, faster.

With MicroStrategy providing the analytical back end and Panopticon supporting a highly interactive, lean-forward analytical experience for users, managers and analysts can compare historical data with other real-time operational inputs, isolate outliers and identify emerging patterns in seconds.

Merge Data from Historical Databases and Real-Time Streaming Sources

Panopticon's unique StreamCube™ in-memory online analytical processing (OLAP) data model powers the system's real-time capabilities. Exceptionally versatile, Panopticon's StreamCube can connect to virtually any data source, including real-time streaming feeds, message buses, Complex Event Processing engines (such as Sybase CEP), Excel files, column-oriented databases, and traditional row-oriented relational databases.

But unlike other systems that can't handle streaming data or whose performance significantly degrades under the strain of large streaming feeds of real-time data, Panopticon's StreamCube is a small-footprint representation of multidimensional data. It's specifically designed to make extremely fast calculations using continuously updated data, offering a distinct advantage over traditional OLAP cubes that pre-calculate and aggregate data in batch processes.

The combination of StreamCube and Panopticon's interactive data visualizations provides the exploratory visual data analysis functions critical in operational decision-making environments.

“We collect a huge variety of data about the pharmaceutical market — everything from prescription renewal rates to physical distribution of drugs. Our clients have been very pleased with the enhanced visibility they now have into our research thanks to Panopticon.”

Harm Friskus
R&D Manager, Farminform

Advanced Visualizations for Real-Time Data

Business users can easily design and modify their own real-time dashboards through a simple drag-and-drop process with Panopticon's intuitive “what you see is what you get” user interface. Once complete, users can embed interactive dashboards into their MicroStrategy Web environment in just minutes, with no coding required and minimal development effort.

Optimized for Fast Visual Analysis

The business world is dynamic. Why should your data be static?

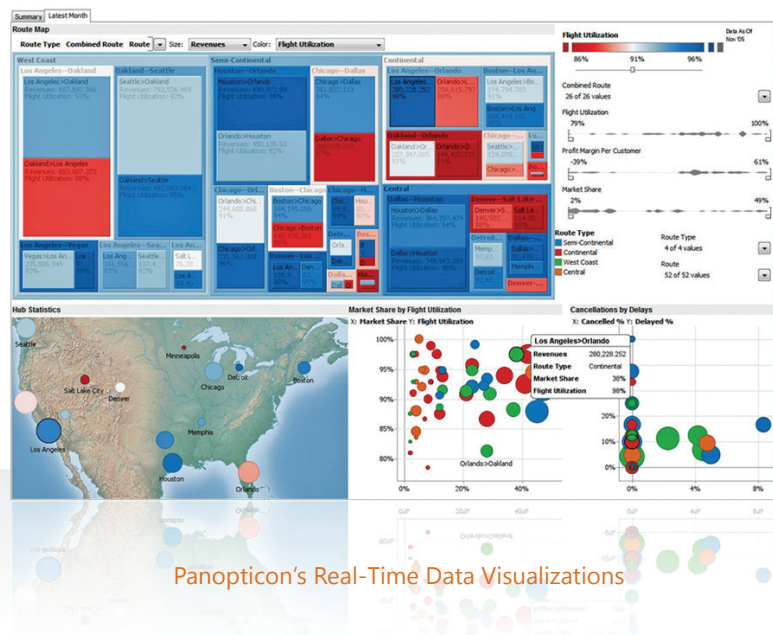
Traditional static diagrams can't show relationships or structures in understandable ways; nor are they effective when exploring large amounts of new and unknown data. Panopticon's data analytics software system helps you see multi-levelled hierarchies, interconnections and details on individual objects in order to solve problems, understand complex relationships and identify areas of concern. Its platforms – designed according to the best practices promoted by visual analysis experts like Edward Tufte, Stephen Few and Jeffery Heer – offer a wide range of interactive data visualizations optimized for fast visual analysis.

MicroStrategy Infrastructure

Improve utilization of your MicroStrategy implementation by giving users direct access to real-time data.

Real-Time Streaming Data

Directly analyze real-time data from sources like retail terminals, websites, trading systems, and network systems.



Panopticon's Real-Time Data Visualizations

“Panopticon’s innovative visualization software gives our clients an unprecedented, executive-level view of their entire project portfolio, enabling them to quickly identify risks and opportunities, and easily drill down to the projects at risk in order to take corrective action.”

Eric Brehm
Executive VP, Deltek

Deployment Options for Any Environment

The Panopticon platform is available in three versions. Each is designed to increase ROI for existing BI investments by combining an extremely high value with a low total cost of ownership.

Panopticon EX Enterprise Application

The Panopticon EX enterprise application is a fully productized system designed for rapid deployment at the workgroup or enterprise level. The platform includes a desktop authoring tool that allows power users to assemble and publish new monitoring and analysis dashboards to the Web.

Panopticon Developer SDK

Panopticon Developer SDK allows developers to embed the in-memory StreamCube OLAP data model and data visualizations into their own applications. SDK supports code-level integration with existing enterprise applications, client/server, or Web-enabled, thin-client deployments.

Panopticon Rapid Development Kit (RDK)

The Panopticon Rapid Development Kit (RDK) combines valuable features of both Panopticon EX and the Developer SDK. It allows you to build dashboards quickly in EX and embed the complete dashboards as objects in any application, such as MicroStrategy. This means you can complete exceedingly sophisticated development projects in just a few hours with minimal coding. It also gives design control to business users who understand best how to visualize the information they’re looking for and adapt it to meet the needs of their own enterprise.

About Panopticon Software

Seeing is more than believing. It’s comprehending, too.

Panopticon Software’s data visualization solutions support rapid analysis to easily understand fast-changing, real-time data, fully integrated with historical time series data sets. Panopticon is an advanced, versatile and highly interactive visual analytics platform that provides a powerful monitoring and alert system. Their advanced data visualization software tools speed clients’ business processes, reduce operational and investment risks, detect anomalies – including fraud – and identify opportunities to increase profits and sales.

Panopticon’s system supports effective and timely decision making and makes it easy to synthesize, present and share results with colleagues and customers. With Panopticon, non-technical business users can create and publish highly sophisticated real-time dashboards in minutes - so they are accessible to hundreds of browser based users.

“Working with ZY Vision was great experience. Their team was tremendously knowledgeable throughout the project and was able to address all of our concerns and challenges.”

Christopher Blades
IT Director, Perfect Output LLC

Visual Analysis for Any Data in Every Environment

Panopticon's platform excels in three critical areas:

- World-class interactive information visualizations designed for fast comprehension of static and time series historical data, including treemaps, heatmaps, scatter plots, and more
- The ability to connect to virtually any data source, including real-time streaming feeds, CEP engines, column-oriented databases, row stores, and proprietary data formats
- Support for fast deployment in a wide range of IT environments

Real-Time Decision Support for World-Class Companies

Companies all over the world have successfully integrated Panopticon into their operational decision support systems. In fact, Panopticon has helped 5 of the 10 largest banks and fund operators in the world – plus several of the largest industrial manufacturers, consumer packaged goods (CPG) producers, architecture and engineering firms, energy companies, and telecommunications firms – make better decisions, faster.

About ZY Vision

ZY Vision, a division of ZY Solutions Corporation, specializes in designing and implementing Business Intelligence (BI) solutions. Our offerings include data management strategies, data warehouse design and development services, ETL development and delivery, as well as world-class BI platform sales and consulting services. We help companies across a wide range of market verticals effectively visualize and analyze corporate data patterns to make better decisions, faster.

The ZY Vision team is composed of business professionals and technology experts who specialize in data management and decision support strategies. Our technical expertise and intimate understanding of business processes give us the unique ability to address your business intelligence needs while maximizing your return on investment and making a positive impact on your bottom line. We look at every objective and challenge from a business perspective first and then apply the best proven technical method to achieve your goals.

Our Team

Our team has helped Fortune 500 companies and emerging enterprises define and implement data management strategies that support a rapid and more effective decision-making process. Our experience, proven expertise and versatile solution suite can help you make the most of your enterprise information.

Contact ZY Vision at 847.242.7000 to find out how our team of experienced professionals can help you make the most of your business intelligence initiatives.